

TRAINING: SOLIDWORKS Surface Modeling (2 Days)

Prerequisites: SOLIDWORKS Essentials, Advanced Part Modeling

Description: Surface Modeling teaches you how to build freeform shapes using SOLIDWORKS mechanical design automation software.

Introduction

- ☒ About This Course

Lesson 1: Understanding Surfaces

- ☒ Solids and Surfaces
- ☒ What is a Solid?
- ☒ Behind the Scenes
- ☒ Creating Solids from Surfaces
- ☒ Decomposing a Solid into Surfaces
- ☒ Additional Surface Concepts
- ☒ Why Use Surfaces?
- ☒ Continuity Explained
- ☒ Workflow with Surfaces

Lesson 2: Introduction to Surfacing

- ☒ Similarities Between Solid and Surface Modeling
- ☒ Basic Surfacing
- ☒ Alternative to Trim

Lesson 3: Solid-Surface Hybrid Modeling

- ☒ Hybrid Modeling
- ☒ Using Surfaces to Modify Solids
- ☒ Interchanging Between Solids and Surfaces
- ☒ Performance Implications
- ☒ Surfaces as Construction Geometry
- ☒ Making Copies of Faces
- ☒ Flattening Surfaces

Lesson 4: Repairing and Editing Imported Geometry

- ☒ Importing Data
- ☒ File Translation
- ☒ Why Do Imports Fail?
- ☒ SOLIDWORKS Import Options
- ☒ Importing a STEP File
- ☒ Comparing Geometry
- ☒ Addressing Translation Errors
- ☒ Repairing and Editing Imported Geometry
- ☒ Procedure for Rebuilding Fillets

Lesson 5: Blends and Patches

- ☒ Smoothing Patches
- ☒ Boundary Surface
- ☒ Corner Blends

Lesson 6: Complex Blends

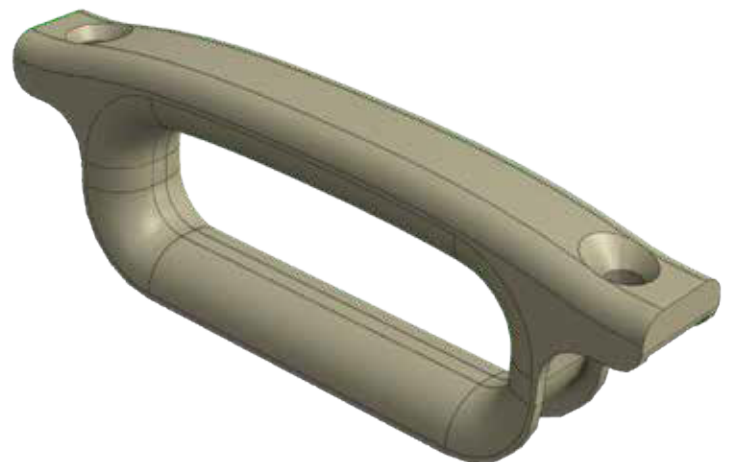
- ☒ Complex Blends
- ☒ Freeform Feature

Lesson 7: Advanced Surface Modeling

- ☒ Stages in the Process
- ☒ Modeling the Lower Half
- ☒ Design Changes

Lesson 8: Master Model Techniques

- ☒ Introduction to Master Models
- ☒ Surface Master Model Technique
- ☒ Working with a Solid Master Model
- ☒ Specialized Features for Plastic Parts



Click or Scan



www.designandprocess.com
+1 251-305-3636