

# TRAINING: SOLIDWORKS Mold Design (2 Days)

**Prerequisites:** Advanced Part Modeling

**Description:** Mold Design Using SOLIDWORKS teaches you several manual mold creation techniques and how to use the Mold Tools in SOLIDWORKS mechanical design automation software.

## Introduction

- ☒ About This Course

## Lesson 1: Surface Concepts and Imported Geometry

- ☒ Surfaces in Mold Design
- ☒ 3D Model Types
- ☒ Geometry vs Topology
- ☒ Behind the Scenes
- ☒ Creating Solids from Surfaces
- ☒ Decomposing a Solid into Surfaces
- ☒ Additional Surface Concepts
- ☒ Surfaces Concepts Takeaways
- ☒ Importing and Mold Design
- ☒ File Translation
- ☒ Why Do Imports Fail?
- ☒ SOLIDWORKS Import Options
- ☒ Comparing Geometry
- ☒ Addressing Translation Errors
- ☒ Repairing and Editing Imported Geometry
- ☒ Procedure for Rebuilding Fillets

## Lesson 2: Core and Cavity

- ☒ Core and Cavity Mold Design
- ☒ SOLIDWORKS Mold Tools
- ☒ Mold Analysis Tools
- ☒ Analyzing Draft on a Model
- ☒ Using the DraftAnalysis Tool
- ☒ Draft Analysis Options
- ☒ Adding Draft
- ☒ Scaling the Model
- ☒ Establish the Parting Lines
- ☒ Shut-Off Surfaces
- ☒ Creating the Parting Surface
- ☒ Surface Bodies
- ☒ Creating the Mold Tooling
- ☒ Seeing Inside the Mold
- ☒ Interlocking the Mold Tooling
- ☒ Creating Part and Assembly Files

## Lesson 3: Side Cores and Pins

- ☒ Additional Mold Tooling
- ☒ Trapped Molding Areas
- ☒ Side Cores
- ☒ Feature Freeze
- ☒ Lifters
- ☒ Core Pins
- ☒ Manual Selection Techniques
- ☒ Modifying Shut-Off Surfaces
- ☒ Completing the Tooling

## Lesson 4: Advanced Parting Line Options

- ☒ Case Study: Manual Parting Line
- ☒ Case Study: Splitting a Part

## Lesson 5: Creating Custom Surfaces for Mold Design

- ☒ Surface Modeling for Mold Design
- ☒ Case Study: Drill Bezel

## Lesson 6: Advanced Surfacing for Mold Design

- ☒ Surface Modeling for Mold Design
- ☒ The Mixer
- ☒ Case Study: Mixer Rear Housing
- ☒ Case Study: Mixer Handle

## Lesson 7: Alternative Methods for Mold Design

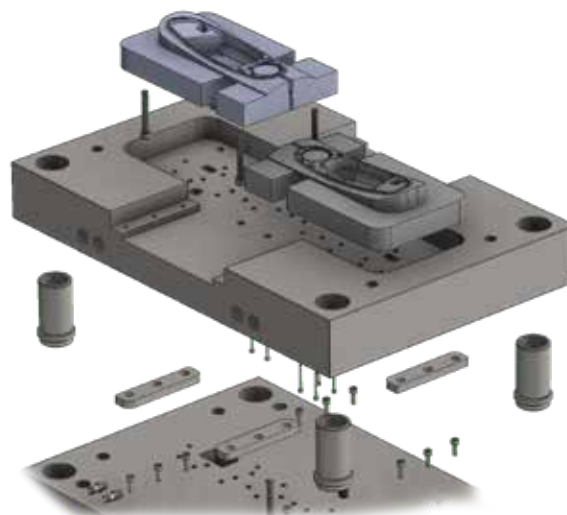
- ☒ Alternate Methods for Mold Design
- ☒ Using Combine and Split
- ☒ Creating a Cavity
- ☒ Techniques for Mold Tooling

## Lesson 8: Reusable Data

- ☒ Reusing Data
- ☒ Task Pane
- ☒ SOLIDWORKS Resources
- ☒ Design Library
- ☒ File Explorer
- ☒ Library Features
- ☒ Configurations in Library Features
- ☒ Smart Components

## Lesson 9: Completing the Mold Base

- ☒ Case Study: Mold Base
- ☒ Organizing the Assembly
- ☒ Modifying the Lifters
- ☒ Lifter Motion
- ☒ Ejector Pins
- ☒ Cooling the Mold
- ☒ Making the Drawing
- ☒ Making Changes
- ☒ Completing the Process



Click or Scan



[www.designandprocess.com](http://www.designandprocess.com)  
+1 251-305-3636