

TRAINING: SOLIDWORKS Electrical 3D (1 Day)

Prerequisites: Completion of SOLIDWORKS Essentials Training and Advanced Assemblies is recommended

Description: This class is designed for users of SOLIDWORKS Electrical 3D to understand how to place components and route wires. Topics covered are: Adding a Cabinet, Inserting Components in the Cabinet, Adding Door Components, Propagating 2D changes to 3D, Routing Wires

Introduction

- ☒ About This Course

Lesson 1: Assembly Creation

- ☒ What are Assemblies?
- ☒ Unarchiving a Project
- ☒ Opening an Existing Project in SOLIDWORKS
- ☒ The Electrical Project Documents
- ☒ SOLIDWORKS Assembly
- ☒ Opening a SOLIDWORKS File from the Browser

Lesson 2: Cabinets, Ducts, Rails

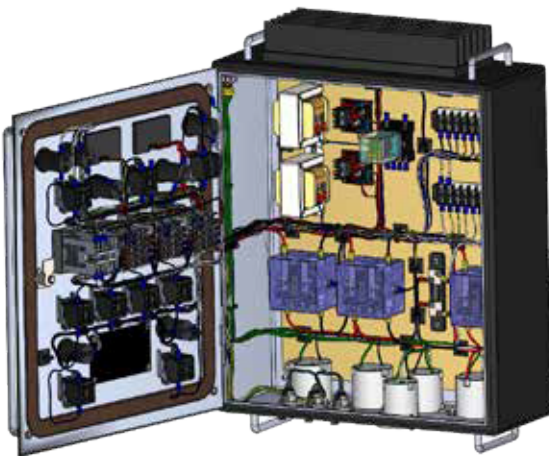
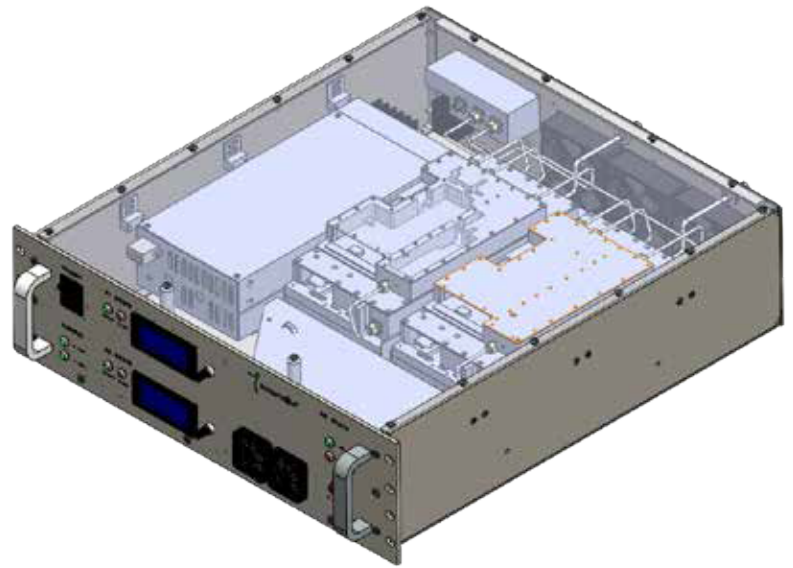
- ☒ Cabinets, Ducts, Rails
- ☒ Adding a Cabinet
- ☒ Stages in the Process
- ☒ Inserting Components
- ☒ Naming
- ☒ Inserting Rails
- ☒ Mate References
- ☒ Change Rail or Duct Length
- ☒ Inserting Ducts
- ☒ Mates

Lesson 3: Component Intelligence

- ☒ What is a component?
- ☒ Component Intelligence
- ☒ The Electrical Component Wizard
- ☒ Stages in the Process
- ☒ Define Faces
- ☒ Create Mate Reference
- ☒ Create Connection Points
- ☒ Creating Cable Connection Points

Lesson 5: Routing Wires

- ☒ Routing Wires
- ☒ Routing Path
- ☒ Sketch Name
- ☒ Route Wires
- ☒ 3DSketch Route
- ☒ Routing Parameters
- ☒ Wire Sketches
- ☒ SOLIDWORKS Route
- ☒ Wire Segregation



Lesson 4: Insert Components

- ☒ Insert Components
- ☒ Align Components
- ☒ Inserting Terminals

Lesson 6: Routing Cables

- ☒ Routing Cables
- ☒ Creating Cable Connection Points
- ☒ Route Cables
- ☒ Set Origin Destination of Cables by Location

Click or Scan



www.designandprocess.com
+1 251-305-3636